



# PROGRAM MANAGEMENT EXPERIENCE

OLH helps our clients track and measure program/project performance, integrate and maintain control of cost and schedule, accurately predict the outcomes of the projects and overall program, and communicate project and program status to all project participants in a timely, effective manner. We do this with a staff that is well versed in the latest project management software, technology, and methods.

- ✓ **Program and Project Management** focuses on the execution phase of a group of projects or a single project. Successful program and project management requires a continuous knowledge of current project performance as well as the ability to forecast and adjust to changes.
- ✓ **Scheduling** is an essential part of a successful Program/Project Management. OLH considers all constraints to develop a comprehensive schedule that accurately reflects the projects' scope and parameters. Our schedulers prepare, monitor, and analyze master plan, detailed design/build, and recovery CPM schedules for different project types. OLH has become a leader in CPM schedule analysis for transportation projects nationwide.
- ✓ **Cost Estimating and Cost Management** is provided as a service during all phases of a project from concept to closeout. Our cost estimators and cost engineers are trained in working with the costs associated with all disciplines customarily found on a project or complex program. OLH offers estimates that are reliable and realistic, allowing our clients to know their costs before they are incurred and track trends against the original cost estimate budget.
- ✓ **Financial Planning and Management** includes our expert knowledge of bond analysis and planning where we have assisted clients with developing a work plan that would provide detailed analysis of a bond program. This also includes funding source administration, cash flow analysis, and commitment and expenditures forecasting, coupled with budget control.
- ✓ **Program / Project Controls** is the part of the program management process that establishes the program cost and schedule criteria or goals, measures progress towards the goals, and forecasts the outcomes. Controls integrate the project's planning, budget, cost, schedule, resource, and technical parameters into a cohesive management system and process. Providing timely and accurate program and project reports aids all team members in having one source for the information.
- ✓ **OLH's Program / Project Management and Control Services** are combined with our Program / Project Management Information Systems capabilities. Our Program / Project Management Information Systems cover all aspects of information technology, including assisting in off-the-shelf software installation, specific software development, and management information systems integration.

We develop solutions that help organizations make better strategic decisions and manage the execution of programs and projects more effectively through the development of Program and Project Management Information Systems. We design and build industry-proven solutions that integrate existing information to deliver immediate and quantifiable benefits.

OLH's Program / Project Management and Controls Services have been provided for Transportation Improvement Programs throughout the United States and in the U.A.E. We support major road and bridge improvement programs for local and state agencies, as well as provide similar services to airport capital improvement programs.

## WHAT WE DO

### Scheduling

- ✓ Onsite or Offsite Support
- ✓ Cost & Resource Loaded CPM Schedules
- ✓ CPM Schedule Analysis
- ✓ 4-D Scheduling
- ✓ Claims Avoidance/Litigation/Management
- ✓ Program Schedule Processes/Procedures

### Cost Estimating / Cost Management

- ✓ Onsite or Offsite Support
- ✓ Project Cost Estimating
- ✓ Cost Studies & Cost to Complete Forecasts
- ✓ Cost Management Processes & Procedures

### Document Control and Management

- ✓ Submittal Tracking & Monitoring
- ✓ Drawing & Specification Revisions Control
- ✓ Request for Information (RFI) Control
- ✓ File Management - Electronic and Hard Copy
- ✓ Document Control Systems Management
- ✓ Document Control Processes & Procedures

### Financial Planning and Management

- ✓ Bond Analysis and Planning
- ✓ Funding Source Administration
- ✓ Cash Flow and Financial Analysis
- ✓ Master Program Financial Management, Budget Control, & Reporting
- ✓ Program Commitment & Expenditure
- ✓ Forecasts

### Project Controls

- ✓ Cost/Schedule Integration & Tracking
- ✓ Value Engineering
- ✓ Resource Management
- ✓ Budget Control & Reporting
- ✓ Risk Assessment/Management
- ✓ Planning/Scheduling & Reporting
- ✓ Project Management Controls Audits

### Program Controls

- ✓ Master Program Schedule
- ✓ Procurement Assistance Services
- ✓ Invoice Tracking and Reporting
- ✓ Monthly Progress Reporting & Benchmarking
- ✓ Design & Construction Contract Administration
- ✓ Earned Value Management (EVMS)

### Program / Project Management Information Systems

- ✓ IT Needs Assessment and Solutions
- ✓ Information Management Systems Integration
- ✓ Custom Project Management Software Solutions
- ✓ Enterprise Project Management System Design, Development, and Deployment
- ✓ Program Information Technology Management
- ✓ Software Application Hosting
- ✓ Project/Program Web Applications
- ✓ Data Management & Analysis
- ✓ Business Intelligence

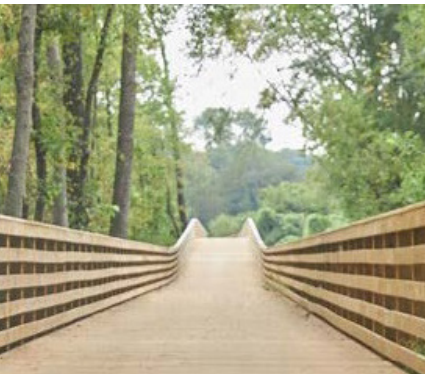
# PROGRAM MANAGEMENT EXPERIENCE



## CLAYTON COUNTY SPOST PROGRAM MANAGEMENT | Clayton County, GA

- ✓ Project Controls
- ✓ Software Development
- ✓ Systems Development
- ✓ CPM Schedule Review

OLH was a member of the team awarded the program management contract for Clayton County's SPOST. Clayton County enacted the SPOST in 1985 and the projection for the 2015 version was \$226M. OLH provides the project controls specialist and implemented our proprietary project management information system, TEAMS. This software was designed specifically for transportation projects and was customized to accommodate the facilities and other procurement projects identified in the County's SPOST program.



## DEKALB COUNTY SPOST PROGRAM MANAGEMENT | DeKalb County, GA

- ✓ Financial Management and Planning
- ✓ CPM Scheduling
- ✓ Project Controls
- ✓ Software Development
- ✓ Cost Control

The DeKalb County SPOST (Special Purpose Local Option Sales Tax) is a one-cent sales tax that provides funding exclusively for capital projects – roads, buildings, vehicles and major equipment, and other long-lived improvements – over the next six years. OLH is a member of the Program Management Team, providing CPM scheduling, financial management, overall project controls, and implementation/integration of the DeKable County SPOST Program Project Management System (TEAMS). (\$636M | Ongoing)



## RICHLAND COUNTY TRANSPORTATION PENNY PROGRAM | Richland County, SC

- ✓ Financial Management and Planning
- ✓ CPM Scheduling
- ✓ Program Management and Controls
- ✓ Cost Estimating
- ✓ Project Management Systems Development
- ✓ CEI Services

OLH was a member of the Program Development Team (PDT) responsible for overseeing this \$1 billion transportation improvement program. OLH provided the full-time Program and Financial Control Manager and a full-time CPM Scheduler. Additionally, OLH provided program/project management and project control services, as well as construction inspection and administration. Our full-time financial management manager was responsible for revenue projections, tracking, and planning for the entire program. (\$1B | 2019)



## CHARLESTON COUNTY ROADWISE TRANSPORTATION IMPROVEMENT PROGRAM | Charleston County, SC

- ✓ Financial Management and Planning
- ✓ CPM Scheduling
- ✓ Software Development
- ✓ CPM Schedule Review
- ✓ Systems Development
- ✓ Cost Estimating
- ✓ Project Controls
- ✓ Utility Coordination Assistance

In 2005, Charleston County hired a Program Manager, which OLH was a member of, to plan, develop, design, construct, and manage the program funded by proceeds from the special sales and use tax. This project included 14 major road improvement projects, numerous paving projects, various drainage improvement projects, and numerous allocation projects, such as bike/pedestrian paths, public works, and smaller facility renovation and improvement projects. (\$1.3B | 2014)

# PROGRAM MANAGEMENT EXPERIENCE

## MISSOURI DEPARTMENT OF TRANSPORTATION SAFE AND SOUND BRIDGE IMPROVEMENT PROGRAM | Statewide, MO

- ✓ Drafting Services
- ✓ Software Development
- ✓ Software Hosting
- ✓ Information Systems Oversight and Management

This design-build program repaired or replaced 802 bridges in 111 counties within the state of Missouri in just 42 months. OLH developed and maintained the Bridge Management System, a webbased application used to record and store information and drawings during the initial bridge field analysis stage, drafted the key existing bridge features, and drafted the proposed bridges, drafting final as-built drawings. (\$487M | 2013)



## BEAUFORT COUNTY TRANSPORTATION IMPROVEMENT PROGRAM | Beaufort County, SC

- ✓ Financial Management
- ✓ Information Systems Oversight and Management
- ✓ Project Controls
- ✓ CPM Scheduling
- ✓ Cost Control
- ✓ CEI Services

In 2008, Beaufort County hired a Program Manager, which OLH was a member of, to plan, develop, design, construct, and manage the program or programs funded by proceeds from the special sales and use tax. This project consisted of 13 major road improvement projects, numerous paving projects, and various drainage improvement projects. (\$300M | 2010)



## OSCEOLA COUNTY TRANSPORTATION IMPROVEMENT PROGRAM | Kissimmee, FL

- ✓ CPM Scheduling
- ✓ Master Planning
- ✓ Program Management

OLH was a member of a Program Manager team which provided professional program management services for a wide range of roadway construction projects. The County's Program consisted of full construction of the 2007 - 2012 Capital Improvement Program with the potential of construction of an additional 224 lane-miles. OLH provided program/project management and project control services. (\$600M | 2010)

## YORK COUNTY CAPITAL PROJECTS SALES AND USE TAX PROGRAM | York County, SC

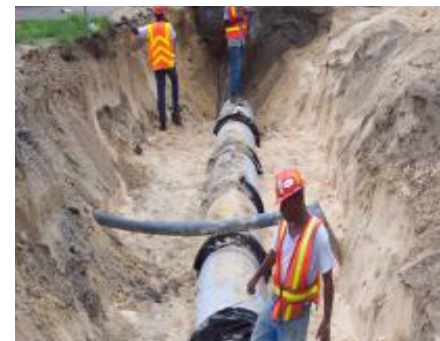
- ✓ Cost Estimating
- ✓ Drafting Services

This program was initiated by York County to provide citizens with a safer and more efficient roadway system. The projects were chosen by a Sales Tax Commission and then approved by the voters in York County. OLH was selected to provide cost estimating services for roads on the Pennies for Progress development list. (\$160M | 2009)

## POLK COUNTY UTILITIES COMMUNITY INVESTMENT PROGRAM | Bartow, FL

- ✓ CPM Scheduling
- ✓ Management Information Systems Integration
- ✓ Cost Control
- ✓ Project Controls

OLH assisted the GEC and County staff with managing nearly 100 CIP and individual projects from planning and development scope of service packages through coordination and monitoring of design firms, contractors, and other consultants engaged by Polk County, including bidding, construction administration, and construction management assistance. (\$82M | 2009)

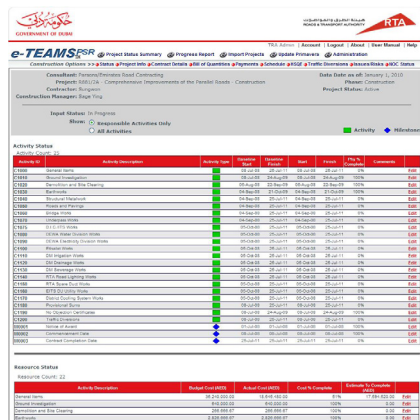


# PROGRAM MANAGEMENT EXPERIENCE

## DUBAI TRAFFIC AND ROADS AGENCY (TRA) - ENTERPRISE PROJECT MANAGEMENT SYSTEM IMPLEMENTATION (EPMS) | Dubai

- ✓ CPM Scheduling
- ✓ Software Development
- ✓ Management Information Systems Integration
- ✓ Project Management Systems Development
- ✓ Project Systems Integration and Architecture

TRA, an agency of Roads and Traffic Authority in Dubai, sought to hire a consultant that would help improve its project management maturity level through the development of Project Management Methodology and the implementation of an EPMS. OLH was a member of the selected team and designed and developed the electronic-Transportation Enterprise Activity Management System® (e-TEAMS), which enabled TRA consultants and contractors to communicate the status of their project activities. OLH also assisted in designing and developing an EPMS which utilizes Primavera's project management and scheduling software and interfaces with other key management information systems and e-TEAMS. (\$165,000 | 2009)



## BLUEPRINT (BP) 2000 TRANSPORTATION IMPROVEMENT PROGRAM | Tallahassee, FL

- ✓ Financial Management
- ✓ Contract Administration
- ✓ Design Review
- ✓ Software Development
- ✓ Oversight of Design/Construction Activities
- ✓ Cost Control
- ✓ CPM Scheduling
- ✓ Project Controls

The BP 2000 Program spanned 15 years and included improvements to transportation facilities, walking trails, parks, floodways and greenways. There were seven road improvement projects, one 4.5 mile park/trail project, and seven flood/waterway management projects. OLH provided a dedicated Program Controls Manager and a Project Manager on Capital Circle Southeast - Woodville Highway to Tram Road project. OLH provided program/project management and program/project control services. (\$1.2B | 2008)



## SCDOT CONSTRUCTION AND RESOURCE MANAGER EAST (CRM EAST) | Statewide, SC

- ✓ Cost Control
- ✓ Cost Estimating
- ✓ CPM Scheduling
- ✓ CPM Schedule Review
- ✓ Drafting Services
- ✓ Information Systems Oversight and Management
- ✓ Project Controls

This project included a public-private partnership with SCDOT and two Construction and Resource Management (CRM) firms to speed the work of an ambitious road system expansion, which consisted of 27 years of road and bridge projects to be completed in seven years, without inflating the size of the agency. (\$421M | 2007)



## LOUISIANA DEPARTMENT OF TRANSPORTATION AND DEVELOPMENT TRANSPORTATION INFRASTRUCTURE MODEL FOR ECONOMIC DEVELOPMENT (TIMED) | Baton Rouge, LA

- ✓ Systems Development
- ✓ CPM Scheduling

This transportation improvement program intended to promote better connectivity throughout the state by expanding several two-lane U.S. and state highways to fourlanes and included 105 individual highway and bridge projects. (\$5.2B | 2003)

